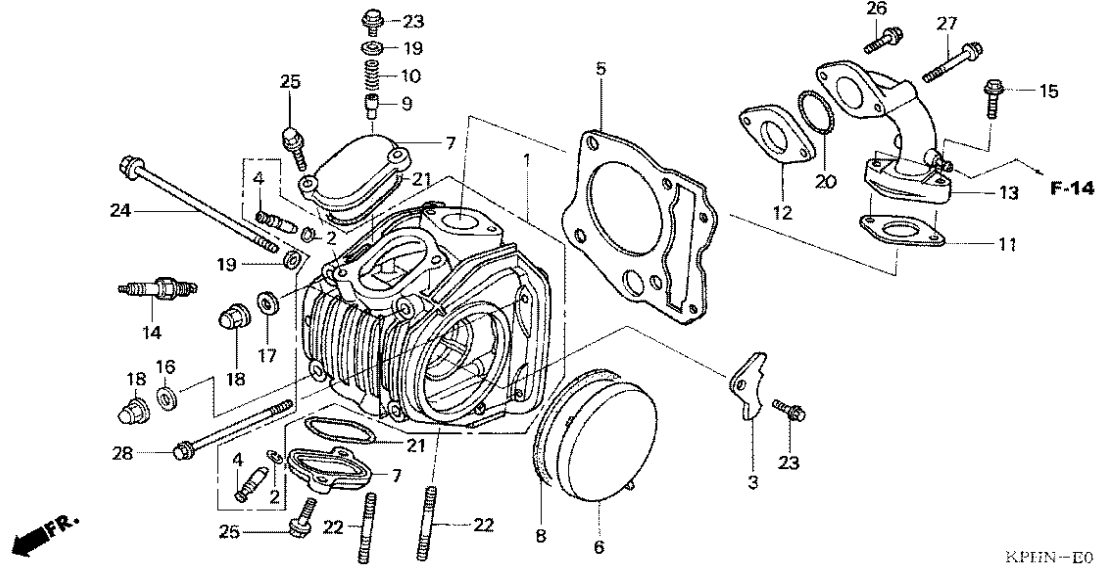


ENGINE CATALOG

KARISMA

E-1

CYLINDER HEAD



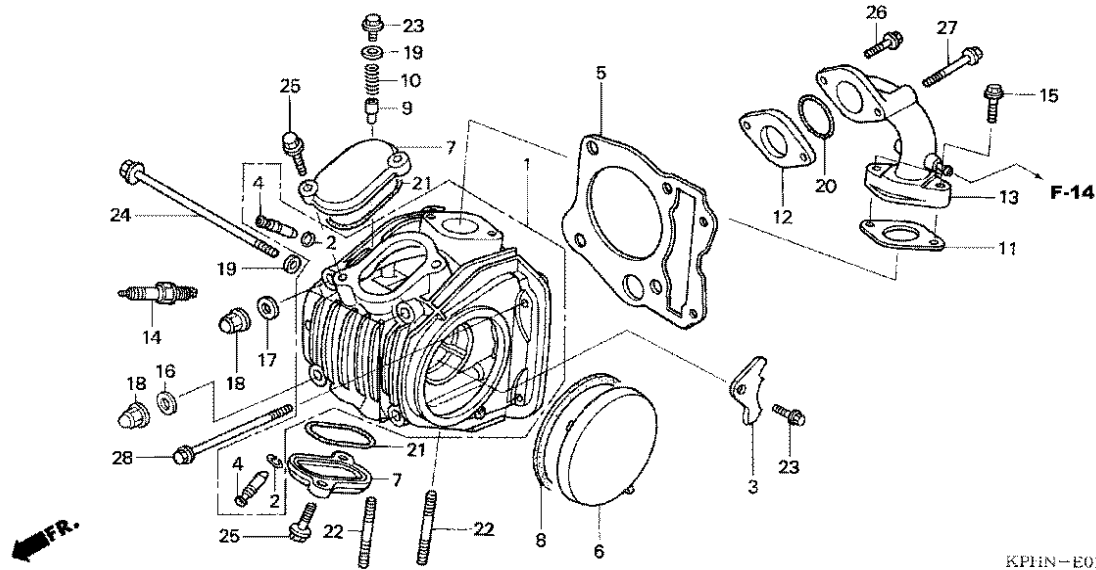
KPHIN-E0100

Service item	F.R.T.
COVER, TAPPET ADJUSTING HOLE (SAME TIME FOR TWO UNITS) (WAKTU SAMA UNTUK DUA UNIT)	0.1
.PLUG, SPARK	
COVER, L. CYLINDER HEAD SIDE	0.2
BOLT, STUD, 8X28 (ADD 0.1 FOR EACH.) (TAMBAHKAN 0.1 UNTUK MASING2)	0.3
INSULATOR, CARBURETOR	0.4
PIPE COMP., IN.	0.5
GASKET, CYLINDER HEAD	1.1
GUIDE, VALVE (INC. REAMING) (TERMASUK REAMING) (ADD 0.3 FOR EACH.) TAMBAHKAN 0.3 UNTUK MASING2) (EXC. VALVE REFACING) (TIDAK TERMASUK SKIR KLEP) (ADD MORE 0.2 IF PERFORMED.) (TAMBAHKAN 0.2 LAGI JIKA DILAK SANAKAN)	1.8
.HEAD COMP., CYLINDER	

Ref. No.	Part No.	Description	Reqd. QTY	Serial No.	Notes
			NF 125/125D		
1	12200-KPH-881	HEAD COMP., CYLINDER	1		
2	12211-KFM-900	CLIP, VALVE GUIDE	2		
3	12211-KPH-900	PLATE, STOPPER	1		
4	12237-KPH-900	GUIDE, VALVE (O.S)	2		
5	12251-KPH-901	GASKET, CYLINDER HEAD	1		
6	12341-KPH-900	COVER, L. CYLINDER HEAD SIDE	1		
7	12361-KPH-900	COVER, TAPPET ADJUSTING HOLE	2		
8	12395-KPH-900	GASKET, L. CYLINDER HEAD SIDE COVER	1		
9	14125-KPH-900	PLUNGER, CAM SETTING	1		
10	14126-KPH-900	SPRING, PLUNGER	1		
11	16201-KCW-851	GASKET, CARBURETOR INSULATOR	1		
12	16211-KPH-900	INSULATOR, CARBURETOR	1		
13	17110-KPH-740	PIPE COMP., IN.	1		
14	31916-KPH-901	PLUG, SPARK (CPR6EA-9) (NGK) -	1		
	31917-KPH-900	PLUG, SPARK (CPR7EA-9) (NGK) -	(1)		
	31926-KPH-901	PLUG, SPARK (U20EPR9) (DENSO)	1		
	31927-KPH-901	PLUG, SPARK (U22EPR9) (DENSO)	(1)		
15	90004-GHB-670	BOLT, FLANGE, 6X25 (NSHF)	2		
16	90441-ME9-000	WASHER, SEALING, 8MM	1		
17	90441-286-000	WASHER, SEALING, 8MM	3		
18	90443-107-000	NUT, CAP, 8MM	4		
19	90461-357-000	WASHER, SEALING, 6.5X12	2		
20	91304-GB1-900	O-RING, 25X2.4	1		

E-1

CYLINDER HEAD

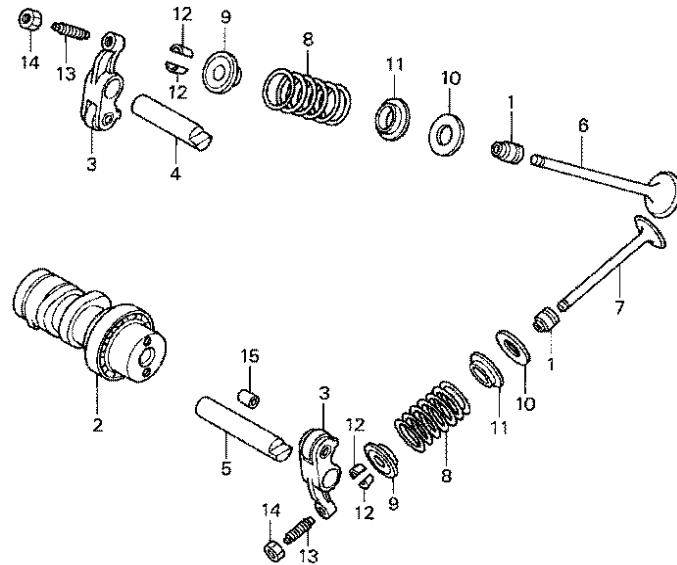


KPHN-E0100

Ref. No.	Part No.	Description	Reqd. QTY	Serial No.	Notes
			NF		
			125/125D		
21	91372-KPH-900	O-RING, TAPPET ADJUSTING HOLE	2		
		CAP	2		
22	92900-08028-0E	BOLT, STUD, 8X28	2		
23	95701-06012-00	BOLT, FLANGE, 6X12	2		
24	95701-06110-00	BOLT, FLANGE, 6X110	1		
25	96001-06020-00	BOLT, FLANGE, 6X20	4		
26	96001-06022-00	BOLT, FLANGE, 6X22	1		
27	96001-06045-00	BOLT, FLANGE, 6X45	1		
28	96001-06095-00	BOLT, FLANGE, 6X95	2		

E-2

CAMSHAFT/VALVE



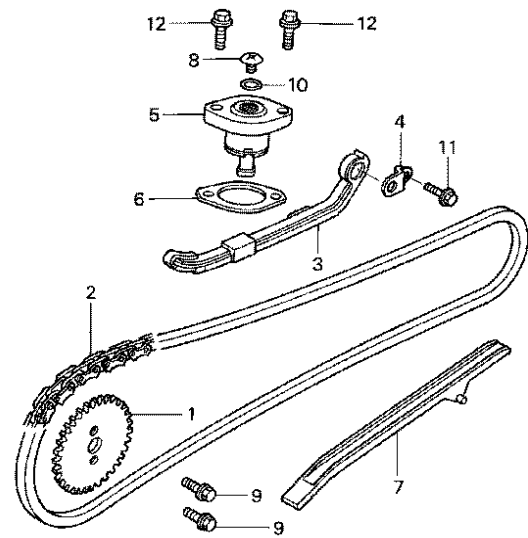
KPHN-E0200

Service item	F.R.T.
CAMSHAFT COMP.	1.3
.SHAFT, EX. ROCKER ARM (SAME TIME FOR TWO UNITS) (WAKTU SAMA UNTUK DUA UNIT)	
.SHAFT, IN. ROCKER ARM	
SPRING, VALVE	1.4
(ADD 0.1 FOR EACH.) (TAMBAHKAN 0.1 UNTUK MASING2)	
(INC. RELATIVE PART) (TERMASUK PART YANG BERHUBUNGAN)	
VALVE	1.6
(ADD 0.2 FOR EACH.) (TAMBAHKAN 0.2 UNTUK MASING2)	
(INC. REFACING) (TERMASUK SKIR KLEP)	
(EXC. VALVE GUIDE REPLACEMENT) (TIDAK TERMASUK PENGGANTIAN VALVE GUIDE)	

Ref. No.	Part No.	Description	Reqd. QTY	Serial No.	Notes
			NF 125/125D		
1	12209-GB4-681	SEAL, VALVE STEM (NOK)	2		
2	14100-KPH-900	CAMSHAFT COMP.	1		
3	14430-KPH-900	ARM COMP., VALVE ROCKER	2		
4	14451-KPH-900	SHAFT, IN. ROCKER ARM	1		
5	14452-KPH-900	SHAFT, EX. ROCKER ARM	1		
6	14711-KPH-900	VALVE, IN.	1		
7	14721-KPH-880	VALVE, EX.	1		
8	14751-KPH-900	SPRING, VALVE	2		
9	14771-GB4-680	RETAINER, VALVE SPRING	2		
10	14775-KFM-900	SEAT, VALVE SPRING OUTER	2		
11	14776-KPH-900	SEAT, VALVE SPRING	2		
12	14781-MA6-000	COTTER, VALVE	4		
13	90012-333-000	SCREW, TAPPET ADJUSTING	2		
14	90206-001-000	NUT, TAPPET ADJUSTING	2		
15	90702-KFM-900	DOWEL PIN, 8X12	1		

E-3

CAM CHAIN/TENSIONER



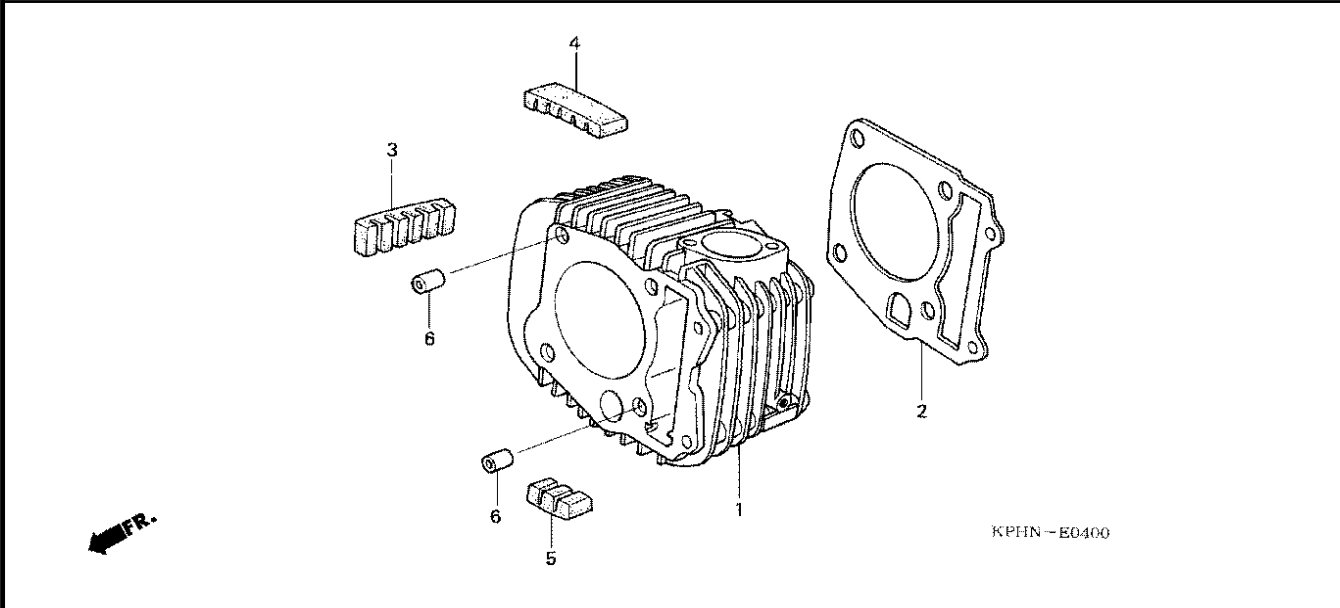
KPHIN-EG300

Service item	F.R.T.
LIFTER ASSY., TENSIONER	0.3
SPROCKET, CAM	0.6
CHAIN, CAM	1.1
.GUIDE COMP., CAM CHAIN	
.TENSIONER ASSY., CAM CHAIN	

Ref. No.	Part No.	Description	Reqd. QTY	Serial No.	Notes
			NF		
			125/125D		
1	14321-KPH-900	SPROCKET, CAM (34T)	1		
2	14401-KPH-900	CHAIN, CAM	1		
3	14510-KPH-880	TENSIONER ASSY., CAM CHAIN ..	1		
4	14515-KGH-900	PLATE, TENSIONER SETTING	1		
5	14520-KPH-901	LIFTER ASSY., TENSIONER	1		
6	14560-KGH-900	GASKET, TENSIONER LIFTER	1		
7	14610-KPH-900	GUIDE COMP., CAM CHAIN	1		
8	90005-KY7-000	SCREW, PAN, 6X6	1		
9	90083-GB6-911	BOLT, KNOCK, 5MM	2		
10	91306-MG3-000	O-RING, 1.5X9.5	1		
11	95701-06014-00	BOLT, FLANGE, 6X14	1		
12	96001-06022-00	BOLT, FLANGE, 6X22	2		

E-4

CYLINDER

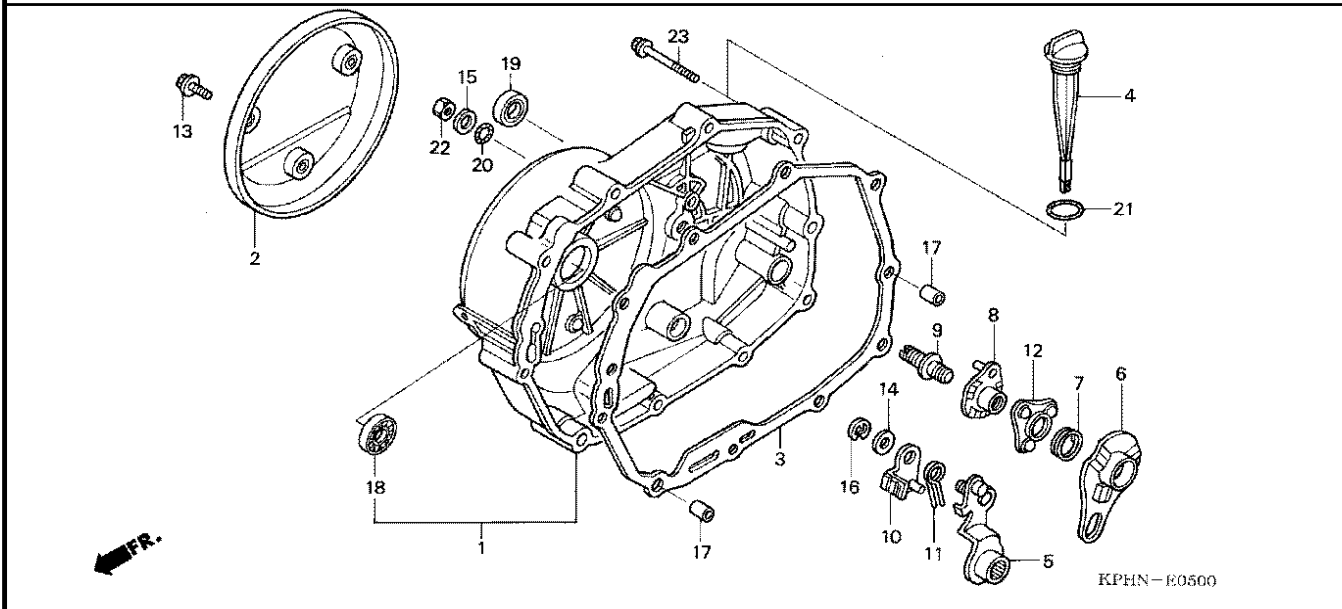


Service item	F.R.T.
GASKET, CYLINDER	1.3
CYLINDER COMP.	1.4

Ref. No.	Part No.	Description	Reqd. QTY	Serial No.	Nptes
			NF		
			125/125D		
1	12100-KPH-900	CYLINDER COMP.	1		
2	12191-KPH-900	GASKET, CYLINDER	1		
3	12195-KPH-900	RUBBER A, INSERT	1		
4	12196-KPH-900	RUBBER B, INSERT	1		
5	12197-KPH-900	RUBBER C, INSERT	1		
6	94301-10120	DOWEL PIN, 10X12	2		

E-5

RIGHT CRANKCASE COVER

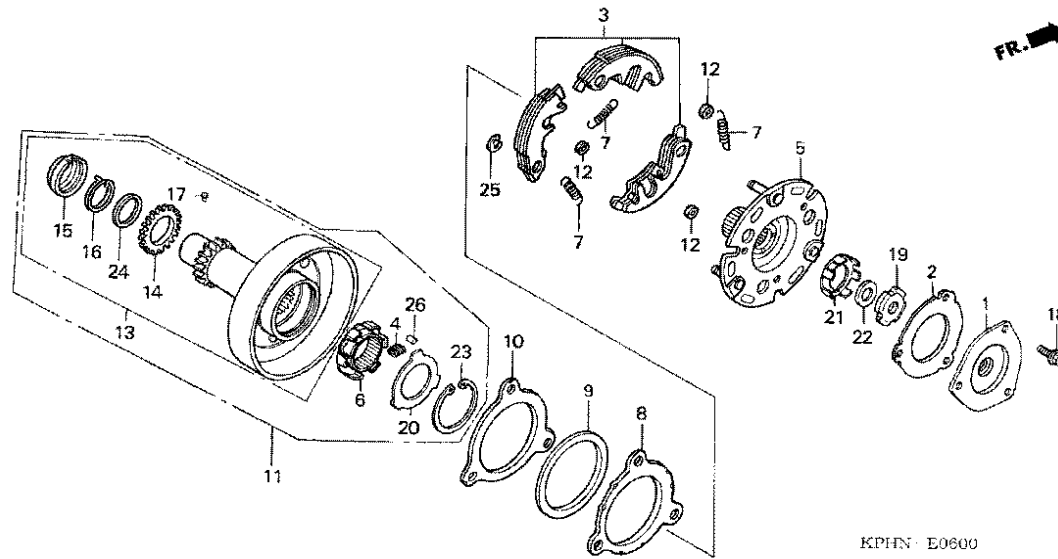


Service item	F.R.T.
PROTECTOR COMP., R. COVER	0.1
GASKET, R. CRANKCASE COVER	0.6
.OIL SEAL, 16X28X7	
.PLATE COMP., CLUTCH CAM	
LEVER COMP., CLUTCH	0.7
(INC. RELATIVE PART)	
(TERMASUK PART YANG BERHUBUNGAN)	
.PLATE COMP., CLUTCH LIFTER	
(INC. RELATIVE PART)	
(TERMASUK PART YANG BERHUBUNGAN)	
COVER COMP., R. CRANKCASE	0.8

Ref. No.	Part No.	Description	Reqd. QTY	Serial No.	Notes
			NF		
			125/125D		
1	11330-KPH-880	COVER COMP., R. CRANKCASE	1		
2	11370-KPH-880	PROTECTOR COMP., R. COVER	1		
3	11394-KPH-900	GASKET, R. CRANKCASE COVER	1		
4	15651-KPH-880	GAUGE, OIL LEVEL	1		
5	22810-KPH-900	LEVER COMP., CLUTCH	1		
6	22820-KPH-900	PLATE COMP., CLUTCH CAM	1		
7	22825-046-000	SPRING, CAM PLATE SIDE	1		
8	22830-KPH-900	PLATE COMP., CLUTCH LIFTER	1		
9	22846-KPH-900	BOLT, CLUTCH ADJUSTING	1		
10	22850-KPH-900	PLATE COMP., BRAKE	1		
11	22853-KPH-900	SPRING, BRAKE	1		
12	22860-HB3-000	RETAINER COMP., BALL	1		
13	90004-GHB-610	BOLT, FLANGE, 6X12 (NSHF)	3		
14	90443-844-000	WASHER, THRUST, 8MM	1		
15	90485-040-000	WASHER, 8MM	1		
16	90605-166-720	CIRCLIP, 7MM	1		
17	90702-KFM-900	DOWEL PIN, 8X12	2		
18	91007-GBG-911	BEARING, RADIAL BALL SPECIAL, 6001U	1		
19	91204-MC7-003	OIL SEAL, 16X28X7	1		
20	91303-001-000	O-RING, 8MM	1		
21	91307-035-000	O-RING, 18X3	1		
22	94030-08000	NUT, HEX., 8MM	1		
23	96001-06040-00	BOLT, FLANGE, 6X40	10		

E-6

ONE WAY CLUTCH



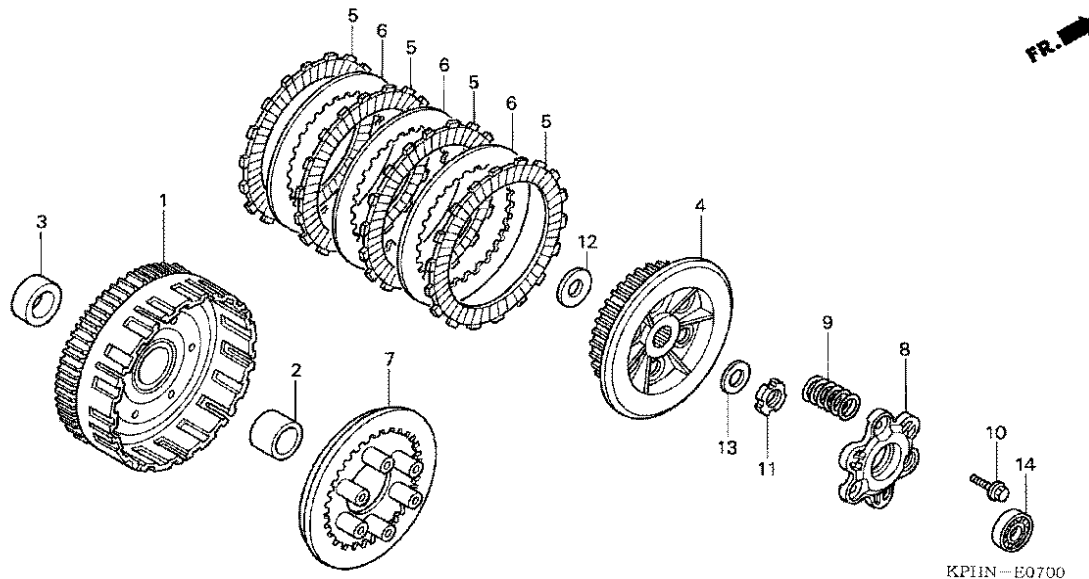
KPHN E0600

Service item	F.R.T.
COVER, OIL FILTER	0.7
INNER COMP., ONE-WAY CLUTCH ... (INC. RELATIVE PART) (TERMASUK PART YANG BERHUBUNGAN)	1.0
.OUTER ASSY., PRIMARY CLUTCH	
.PLATE COMP., PRIMARY DRIVE	
.WEIGHT SET, PRIMARY CLUTCH	
GEAR COMP., PRIMARY DRIVE	1.1

Ref. No.	Part No.	Description	Reqd. QTY	Serial No.	Notes
			NF 125/125D		
1	15431-KPH-900	COVER, OIL FILTER	1		
2	15439-KPH-900	GASKET, OIL FILTER	1		
3	22535-KPH-306	WEIGHT SET, PRIMARY CLUTCH ..	1		
4	22606-KPH-880	SPRING, ONE WAY RETAINER	6		
5	22610-KPH-880	PLATE COMP., PRIMARY DRIVE ..	1		
6	22630-GB2-000	INNER COMP., ONE-WAY CLUTCH ..	1		
7	22641-KPH-900	SPRING, PRIMARY CLUTCH	3		
8	22642-KPH-900	WASHER, CLUTCH SIDE	1		
9	22643-KPH-900	SPRING, SIDE FRICTION	1		
10	22644-KPH-900	PLATE, CLUTCH SIDE	1		
11	22660-KPH-880	OUTER ASSY., PRIMARY CLUTCH ..	1		
12	22804-KPH-880	RUBBER, CLUTCH DAMPER	3		
13	23120-KPH-880	GEAR COMP., PRIMARY DRIVE ...	1		
14	23122-KPH-900	SUB GEAR (20T)	1		
15	23123-KPH-900	RETAINER, SPRING	1		
16	23124-KPH-900	SPRING, SUB GEAR	1		
17	23125-KPH-900	PIN, STOPPER	1		
18	90083-KFL-850	BOLT, SPECIAL FLANGE, 5X8 ...	3		
19	90231-087-010	NUT, LOCK, 14MM	1		
20	90401-GB2-000	WASHER, 30X45X0.8	1		
21	90431-GN5-910	WASHER, LOCK	1		
22	90432-086-000	WASHER B, LOCK	1		
23	90455-GB2-000	CIRCLIP, INTERNAL, 45MM	1		
24	90603-KPH-900	SET RING, 25MM	1		
25	90605-166-720	CIRCLIP, 7MM	3		
26	91101-GB2-000	ROLLER, 5X8	6		

E-7

CLUTCH



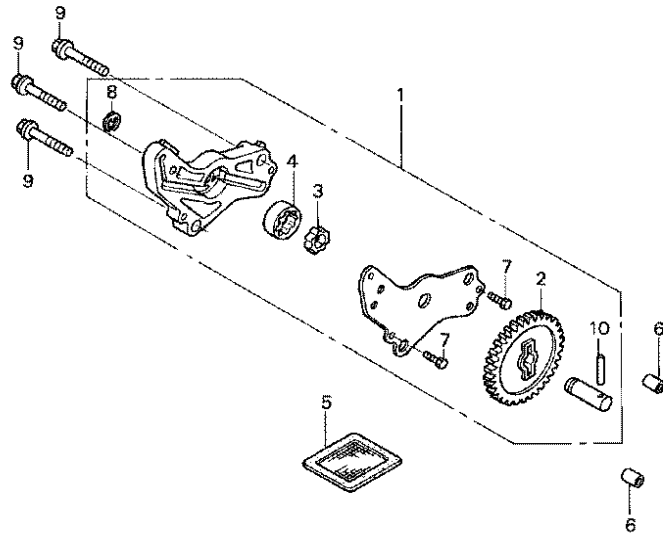
KPIIN-E0700

Service item	F.R.T.
BEARING, RADIAL BALL, 6804	0.7
OUTER COMP., CLUTCH	1.0
.PLATE, CLUTCH LIFTER	
.SPRING, CLUTCH	
(SAME TIME FOR TWO UNITS OR MORE)	
(WAKTU SAMA UNTUK DUA UNIT ATAU LEBIH)	
CENTER, CLUTCH	1.2
.DISK, CLUTCH FRICTION	
(INC. RELATIVE PART)	
(SAME TIME FOR TWO UNITS OR MORE)	
(WAKTU SAMA UNTUK DUA UNIT ATAU LEBIH)	
.PLATE, CLUTCH PRESSURE	

Ref. No.	Part No.	Description	Reqd. QTY	Serial No.	Notes
			NF		
			125/125D		
1	22100-KPH-880	OUTER COMP., CLUTCH	1		
2	22115-KPH-900	GUIDE, CLUTCH OUTER	1		
3	22116-KPH-900	COLLAR, CLUTCH OUTER	1		
4	22121-KPH-900	CENTER, CLUTCH	1		
5	22201-KPH-900	DISK, CLUTCH FRICTION	4		
6	22321-KE8-000	PLATE, CLUTCH	3		
7	22350-KPH-900	PLATE, CLUTCH PRESSURE	1		
8	22361-KPH-900	PLATE, CLUTCH LIFTER	1		
9	22401-KPH-900	SPRING, CLUTCH	6		
10	90050-KPH-900	BOLT, SPECIAL FLANGE, 6X20	3		
11	90231-KM7-700	NUT, LOCK, 14MM	1		
12	90403-KPH-900	WASHER, THRUST, 17MM	1		
13	90501-GBL-730	WASHER, 14MM	1		
14	91002-MG8-003	BEARING, RADIAL BALL, 6804 (K0Y0)	1		

E-8

OIL PUMP



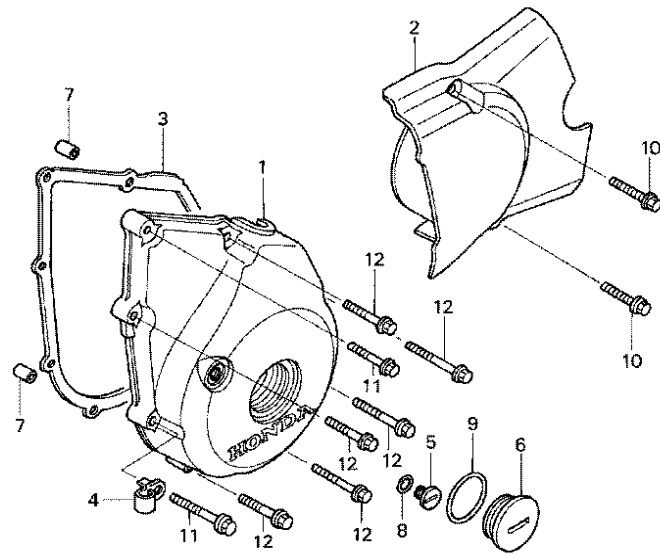
KPHN · E0800

Service item	F.R.T.
SCREEN, OIL FILTER	0.6
PUMP ASSY., OIL	1.2
(INC. RELATIVE PART)	
(TERMASUK PART YANG BERHUBUNGAN)	

Ref. No.	Part No.	Description	Reqd. QTY	Serial No.	Notes
			NF		
			125/125D		
1	15100-KPH-900	PUMP ASSY., OIL	1		
2	15133-KPH-900	GEAR, OIL PUMP DRIVEN (30T) ..	1		
3	15331-GF6-000	ROTOR, OIL PUMP INNER	1		
4	15332-GF6-000	ROTOR, OIL PUMP OUTER	1		
5	15421-035-010	SCREEN, OIL FILTER	1		
6	90702-KFM-900	DOWEL PIN, 8X12	2		
7	93301-05012-0J	BOLT, HEX., 5X12	2		
8	94540-06018	E-RING, 6MM	1		
9	95701-06035-00	BOLT, FLANGE, 6X35	3		
10	96220-40238	ROLLER, 4X23.8	1		

E-9

LEFT CRANKCASE COVER



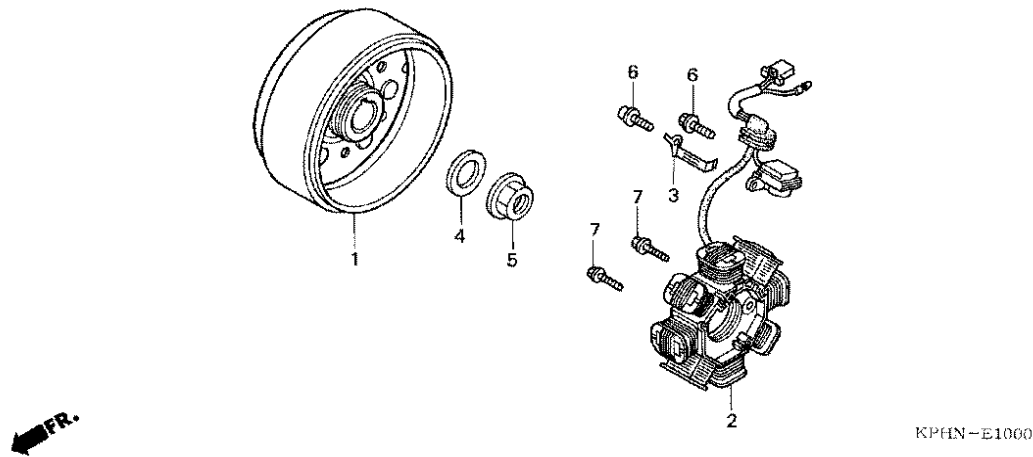
KPHN-E0900

Service item	F.R.T.
COVER COMP., L. RR.	0.1
GASKET, L. CRANKCASE COVER ...	0.3
COVER, L. CRANKCASE	0.4

Ref. No.	Part No.	Description	Reqd. QTY	Serial No.	Notes
			NF		
			125/125D		
1	11341-KPH-880	COVER, L. CRANKCASE	1		
2	11360-KPH-880	COVER COMP., L. RR.	1		
3	11395-KPH-900	GASKET, L. CRANKCASE COVER ..	1		
4	16236-GBG-900	CLAMP, OVER FLOW PIPE	1		
5	90084-428-000	CAP, A.C. GENERATOR	1		
6	90087-KGH-900	CAP, 30MM	1		
7	90702-KFM-900	DOWEL PIN, 8X12	2		
8	91303-377-000	O-RING, 13.8X2.5	1		
9	91356-KGH-901	O-RING, 30MM	1		
10	96001-06022-00	BOLT, FLANGE, 6X22	2		
11	96001-06028-00	BOLT, FLANGE, 6X28	2		
12	96001-06035-00	BOLT, FLANGE, 6X35	6		

E-10

GENERATOR

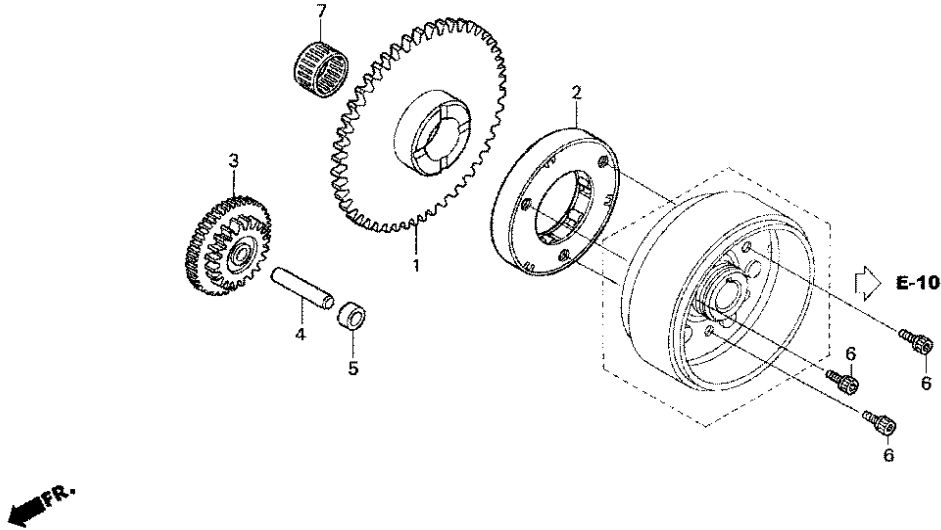


Service item	F.R.T.
FLYWHEEL COMP.	0.5
.STATOR COMP.	

Ref. No.	Part No.	Description	Reqd. QTY	Serial No.	Notes
			NF		
			125/125D		
1	31110-KPH-901	FLYWHEEL COMP.	1		
2	31120-KPH-881	STATOR COMP.	1		
3	32961-KPH-900	CLAMPER, A.C. GENERATOR CORD	1		
4	90439-SB2-010	WASHER, SPECIAL, 24X12X2.3 ..	1		
5	94050-12000	NUT, FLANGE, 12MM	1		
6	96001-06014-00	BOLT, FLANGE, 6X14	2		
7	96001-06022-00	BOLT, FLANGE, 6X22	2		

E-11

STARTING CLUTCH

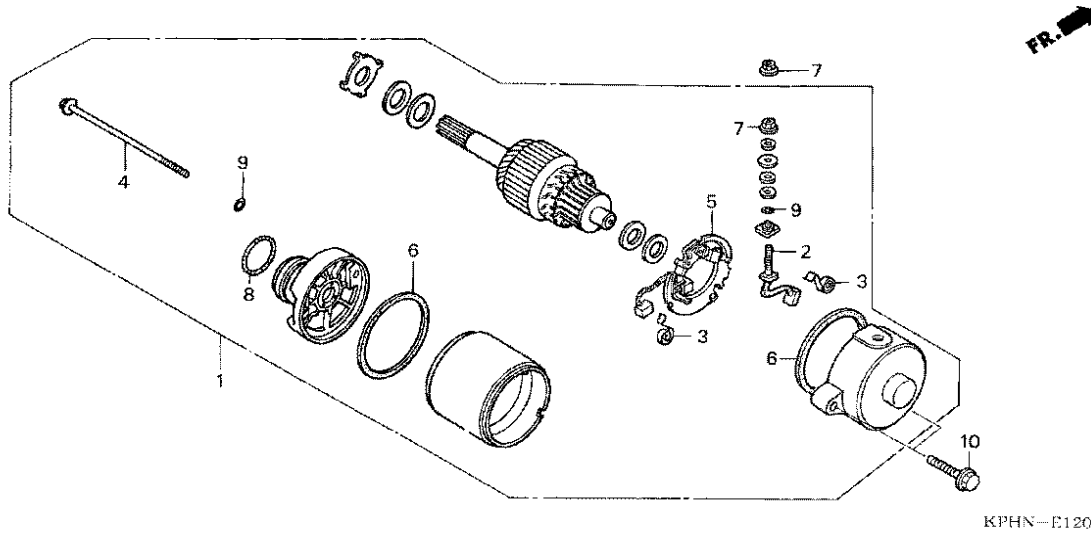


Service item	F.R.T.
GEAR, STARTER REDUCTION	0.3
GEAR COMP., STARTER DRIVEN ...	0.4
CLUTCH ASSY., ONE WAY	0.5

Ref. No.	Part No.	Description	Reqd. QTY	Serial No.	Notes
			NF		
			125/125D		
1	28110-KPH-900	GEAR COMP., STARTER DRIVEN (57T)	1		
2	28120-KPH-901	CLUTCH ASSY., ONE WAY	1		
3	28131-KPH-880	GEAR, STARTER REDUCTION (17T/55T)	1		
4	28132-KPH-900	SHAFT, REDUCTION GEAR	1		
5	28133-KPH-900	COLLAR, STARTER REDUCTION ...	1		
6	90010-KM1-000	BOLT, SOCKET, 8X18	3		
7	91071-KPH-901	BEARING, NEEDLE, 21X25X17 ...	1		

E-12

STARTING MOTOR



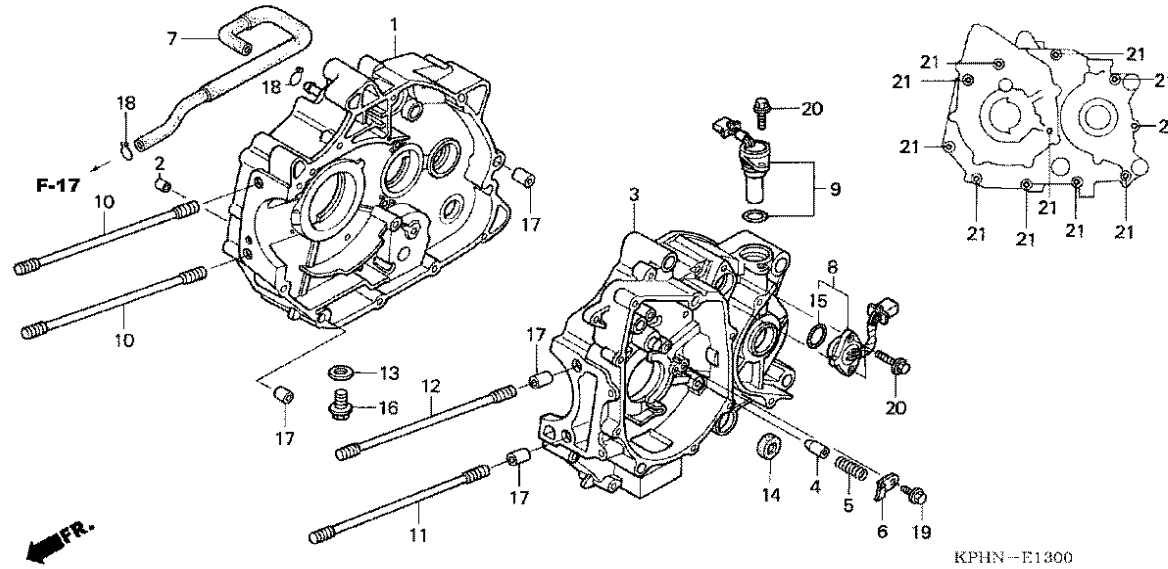
KPHN-E1200

Service item	F.R.T.
MOTOR ASSY., STARTER	0.7
BRUSH SET, TERMINAL	0.9
.HOLDER SET, BRUSH	

Ref. No.	Part No.	Description	Reqd. QTY	Serial No.	Notes
			NF		
			125/125D		
1	31200-KPH-881	MOTOR ASSY., STARTER	1		
2	31201-KPH-881	BRUSH SET, TERMINAL	1		
3	31204-KG8-004	SPRING, BRUSH	2		
4	31205-MBE-008	BOLT, SETTING	2		
5	31206-MBE-008	HOLDER, BRUSH	1		
6	31207-MBE-008	RING	2		
7	90071-MB0-000	NUT-WASHER, 6MM	2		
8	91309-425-003	O-RING, 24.4X3.1 (ARAI)	1		
9	91320-MB0-000	O-RING	3		
10	95701-06025-00	BOLT, FLANGE, 6X25	2		

E-13

CRANKCASE

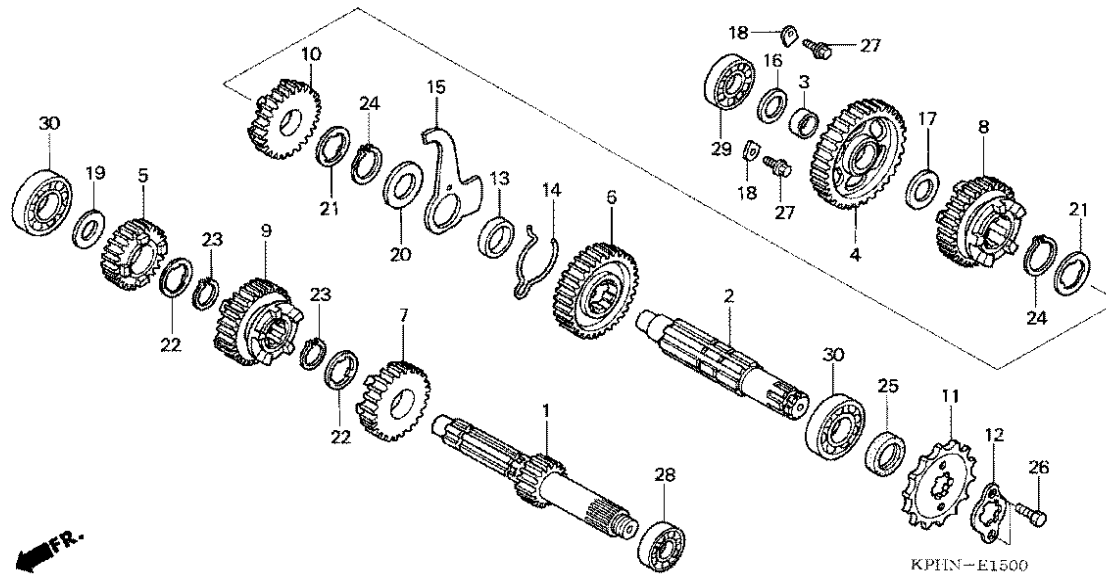


Service item	F.R.T.
SWITCH SET, CHANGE	0.3
SENSOR ASSY., SPEED	0.4
BOLT, CYLINDER STUD	1.3
(ADD 0.1 FOR EACH.)	
(TAMBAHKAN 0.1 UNTUK MASING2)	
CRANKCASE COMP., R.	*4.3
CRANKCASE COMP., L.	*4.9

Ref. No.	Part No.	Description	Reqd. QTY	Serial No.	Notes
			NF		
			125/125D		
1	11100-KPH-880	CRANKCASE COMP., R.	1		
2	11133-KPH-900	JET, OIL, 0.8MM	1		
3	11200-KPH-900	CRANKCASE COMP., L.	1		
4	11215-KPH-900	PLUG, BEARING PUSH	1		
5	11216-KPH-900	SPRING, BEARING PUSH	1		
6	11217-KPH-900	PLATE, BEARING	1		
7	15761-KPH-900	TUBE, BREATHER	1		
8	35750-KPH-900	SWITCH SET, CHANGE	1		
9	37700-KPH-901	SENSOR ASSY., SPEED	1		
10	90031-KPH-900	BOLT, CYLINDER STUD	2		
11	90032-KPH-900	BOLT, CYLINDER STUD	1		
12	90033-KPH-900	BOLT, CYLINDER STUD	1		
13	90407-259-000	PACKING, DRAIN COCK, 12.5X20	1		
14	91208-KPH-901	OIL SEAL, 11.6X24X10	1		
15	91305-KPH-900	O-RING, 21X2.3	1		
16	92800-12000	BOLT, DRAIN PLUG, 12MM	1		
17	94301-10120	DOWEL PIN, 10X12	4		
18	95002-70000	CLIP, TUBE (C11)	2		
19	95701-06014-00	BOLT, FLANGE, 6X14	1		
20	95701-06016-00	BOLT, FLANGE, 6X16	3		
21	96001-06060-00	BOLT, FLANGE, 6X60	11		

E-15

TRANSMISSION



KPHIN-E1500

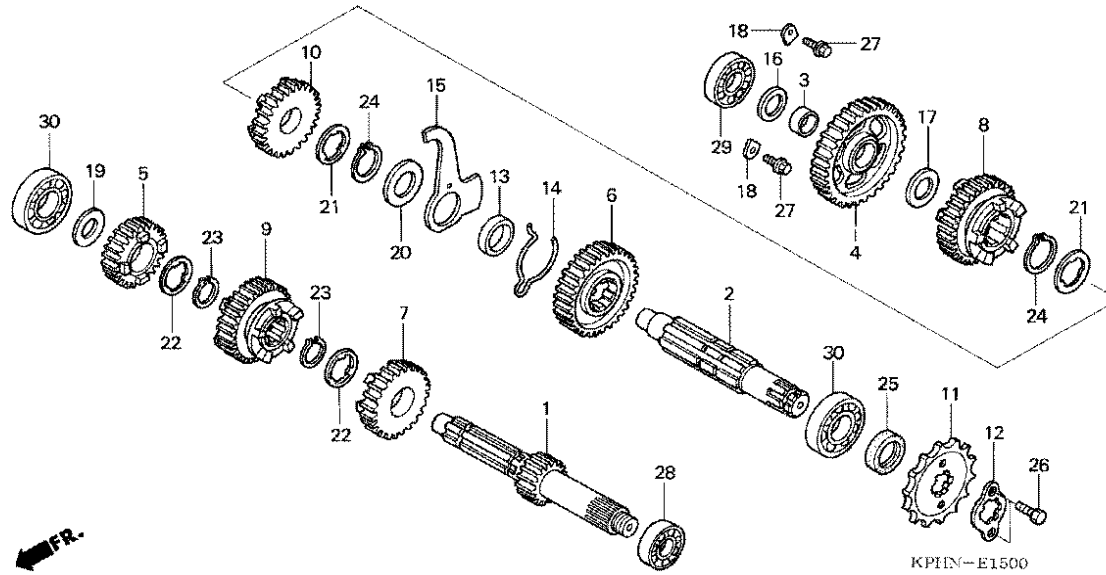
Service item	F.R.T.
SPROCKET, DRIVE	0.2
COUNTERSHAFT	*4.1
(INC. RELATIVE PART) (TERMASUK PART YANG BERHUBUNGAN)	
MAINSHAFT (INC. RELATIVE PART) (TERMASUK PART YANG BERHUBUNGAN)	
(WHEN SERVICING COMP., UNIT, F.R.T. IS 4.3 (JIKA UNIT LENGKAP DI SERVICE, F.R.T. ADALAH 4.3	

Ref. No.	Part No.	Description	Reqd. QTY	Serial No.	Notes
			NF 125/125D		
1	23211-KPH-881	MAINSHAFT (14T)	1		
2	23221-KPH-881	COUNTERSHAFT	1		
3	23415-KPH-900	BUSH, 15MM	1		
4	23421-KPH-900	GEAR, COUNTERSHAFT FIRST (35T)	1		
5	23431-KPH-900	GEAR, MAINSHAFT SECOND (20T)	1		
6	23441-KPH-900	GEAR, COUNTERSHAFT SECOND (31T)	1		
7	23451-KPH-900	GEAR, MAINSHAFT THIRD (20T) -	1		
8	23461-KPH-900	GEAR, COUNTERSHAFT THIRD (23T)	1		
9	23471-KPH-900	GEAR, MAINSHAFT FOURTH (26T)	1		
10	23481-KPH-900	GEAR, COUNTERSHAFT FOURTH (24T)	1		
11	23801-KPH-900	SPROCKET, DRIVE (14T)	1		
12	23802-GN5-910	PLATE, FIXING	1		
13	23911-KPH-900	COLLAR, LOCK PLATE	1		
14	24305-KPH-900	SPRING, CHANGE FRICTION	1		
15	24306-KPH-900	PLATE, DRUM LOCK	1		
16	90412-KPH-900	WASHER, SPECIAL, 12X23	1		
17	90412-187-000	WASHER, THRUST, 15MM	1		
18	90441-KA4-700	PLATE, BEARING HOLDER	2		
19	90452-KGH-900	WASHER, SPECIAL, 12MM	1		
20	90452-413-000	WASHER, THRUST, 20MM	1		
21	90461-GB4-770	WASHER, SPLINE, 20X1.2	2		
22	90461-115-000	WASHER, SPLINE, 17MM	2		
23	90601-001-000	CIRCLIP, EXTERNAL, 17MM	2		



E-15

TRANSMISSION

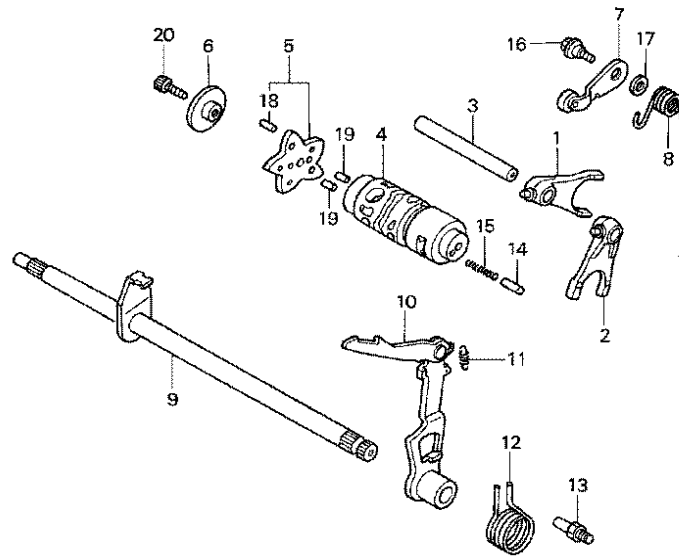


Ref. No.	Part No.	Description	Reqd. QTY	Serial No.	Notes
			NF		
			125/125D		
24	90605-200-000	SET RING, 20MM	2		
25	91204-KPH-901	OIL SEAL, 17X30X5	1		
26	92101-06010-0A	BOLT, HEX., 6X10	2		
27	95701-06014-00	BOLT, FLANGE, 6X14	2		
28	96100-60010-00	BEARING, RADIAL BALL, 6001 ..	1		
29	96100-62010-00	BEARING, RADIAL BALL, 6201 ..	1		
30	96100-62030-00	BEARING, RADIAL BALL, 6203 ..	2		

2

E-16

GEARSHIFT DRUM



KPHN-E1600

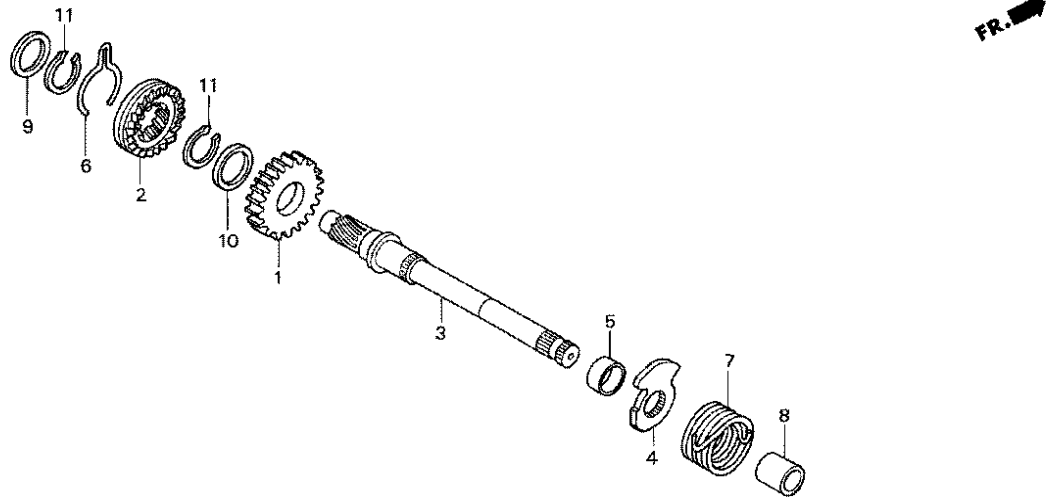
Service item	F.R.T.
PLATE COMP., GEARSHIFT DRUM	
STOPPER	1.1
.STOPPER COMP., GEARSHIFT DRUM (INC. RELATIVE PART) (TERMASUK PART YANG BERHUBUNGAN)	
ARM COMP., GEARSHIFT	1.2
(INC. RELATIVE PART) (TERMASUK PART YANG BERHUBUNGAN)	
.SPINDLE COMP., GEARSHIFT	
DRUM, GEARSHIFT	*4.1
.FORK, GEARSHIFT (SAME TIME FOR TWO UNITS OR MORE) (WAKTU SAMA UNTUK DUA UNIT ATAU LEBIH)	

Ref. No.	Part No.	Description	Reqd. QTY NF 125/125D	Serial No.	Notes
1	24211-KPH-900	FORK, R. GEARSHIFT	1		
2	24212-KPH-900	FORK, L. GEARSHIFT	1		
3	24241-KPH-900	SHAFT, GEARSHIFT FORK	1		
4	24301-KPH-900	DRUM, GEARSHIFT	1		
5	24410-KPH-900	PLATE COMP., GEARSHIFT DRUM STOPPER	1		
6	24421-KPH-900	HOLDER, DRUM STOPPER	1		
7	24430-KPH-900	STOPPER COMP., GEARSHIFT DRUM	1		
8	24435-KPH-900	SPRING, SHIFT DRUM STOPPER ..	1		
9	24610-KPH-900	SPINDLE COMP., GEARSHIFT	1		
10	24630-KPH-900	ARM COMP., GEARSHIFT	1		
11	24641-KPH-900	SPRING, GEARSHIFT ARM	1		
12	24651-KPH-900	SPRING, GEARSHIFT RETURN	1		
13	24652-KPH-900	PIN, SHIFT RETURN SPRING	1		
14	35751-KPH-900	CAP, CHANGE SWITCH CONTACT ..	1		
15	35752-KPH-900	SPRING, CHANGE SWITCH CONTACT	1		
16	90022-MG8-000	PIVOT, SHIFT DRUM STOPPER ARM	1		
17	90435-HB3-000	WASHER, 6.1MM	1		
18	91111-KW7-900	ROLLER, 4X10.8	5		
19	96220-30085	ROLLER, 3X8.5	2		
20	96700-06016-00	BOLT, SOCKET, 6X16	1		

2

E-17

KICK STARTER SPINDLE



KPHN-E1700

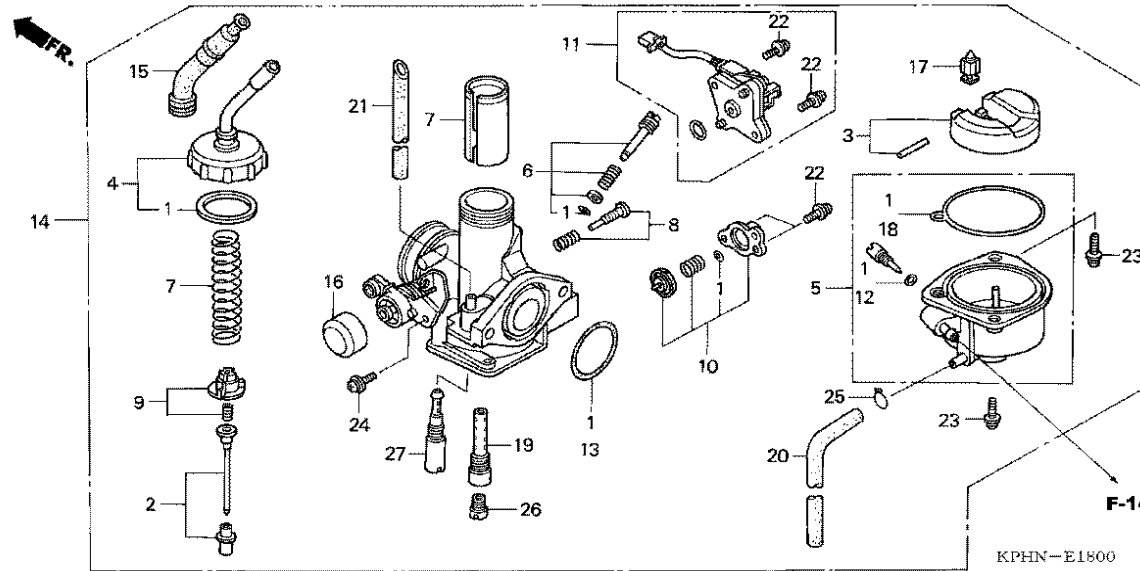
Service item	F.R.T.
SPRING, KICK RETURN	1.1
PINION, KICK STARTER	*4.0
.SPINDLE, KICK STARTER	

Ref. No.	Part No.	Description	Reqd. QTY	Serial No.	Notes
			NF		
			125/125D		
1	28211-KPH-900	PINION, KICK STARTER (27T) ..	1		
2	28221-KPH-900	RATCHET, STARTER DRIVE	1		
3	28251-KPH-900	SPINDLE, KICK STARTER	1		
4	28262-KPH-900	RETAINER, KICK SPRING	1		
5	28265-KPH-900	COLLAR, KICK RETAINER	1		
6	28271-KPH-900	SPRING, STARTER PINION			
		FRICION	1		
7	28281-KPH-900	SPRING, KICK RETURN	1		
8	28282-KPH-900	COLLAR, KICK SPRING	1		
9	90452-KPH-900	WASHER, THRUST, 15.5MM	1		
10	90454-KPH-900	WASHER, 25X20.2X1	1		
11	90605-200-000	SET RING, 20MM	2		

2

E-18

CARBURETOR



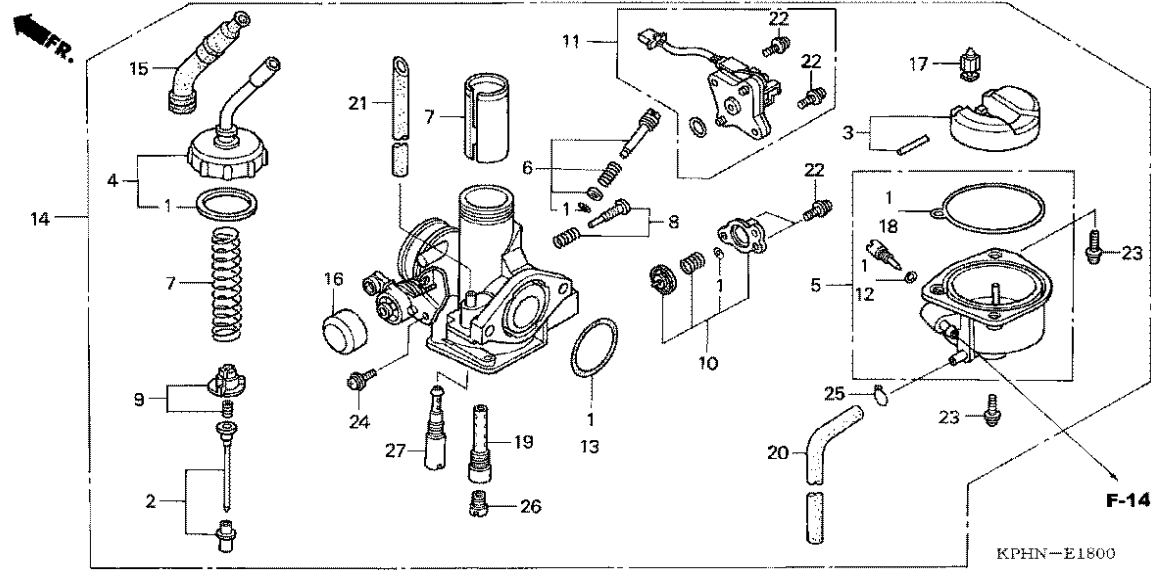
Service item	F.R.T.
TOP SET	0.2
SWITCH ASSY., THROTTLE	0.3
.VALVE SET, AIR CUT	
.VALVE SET, THROTTLE	
CHAMBER SET, FLOAT	0.5
CARBURETOR ASSY.	0.6
.FLOAT SET	
.JET, MAIN,	
.VALVE COMP., FLOAT	
NEEDLE SET, JET	0.7

Ref. No.	Part No.	Description	Reqd. QTY	Serial No.	Notes
			NF		
			125/125D		
1	16010-KPH-901	GASKET SET	1		
2	16012-KPH-901	NEEDLE SET, JET	1		
3	16013-KPG-901	FLOAT SET	1		
4	16014-KPH-901	TOP SET	1		
5	16015-KPH-901	CHAMBER SET, FLOAT	1		
6	16016-KEV-831	SCREW SET	1		
7	16022-KPH-901	VALVE SET, THROTTLE	1		
8	16028-KPH-901	SCREW SET	1		
9	16037-KPH-901	PLATE SET, VALVE	1		
10	16048-KPH-901	VALVE SET, AIR CUT	1		
11	16060-KPH-901	SWITCH ASSY., THROTTLE	1		
12	16075-GHB-640	O-RING, 1.3X4.3	1		
13	16075-KPH-901	O-RING	1		
14	16100-KPH-881	CARBURETOR ASSY. (APBF3A A) ..	1		
15	16118-GB4-003	CAP, CABLE SEALING	1		
16	16148-141-881	CAP, CHOKE DUST	1		
17	16155-883-005	VALVE COMP., FLOAT	1		
18	16163-GBG-960	GASKET, FLOAT CHAMBER	1		
19	16165-KPH-901	HOLDER, NEEDLE JET	1		
20	16199-GJ3-601	PIPE, OVERFLOW	1		
21	16199-KPH-901	TUBE, AIR VENT	1		
22	93892-04010-10	SCREW-WASHER, 4X10	4		
23	93892-04014-18	SCREW-WASHER, 4X14	2		
24	93892-05010-18	SCREW-WASHER, 5X10	1		
25	95002-02659	CLIP, TUBE (B6.5)	1		

2

E-18

CARBURETOR



Ref. No.	Part No.	Description	Reqd. QTY	Serial No.	Notes
			NF		
			125/125D		
26	99101-KPH-075	JET, MAIN, #75	1		
27	99104-KPH-0350	JET, SLOW, #35	1		

2